

HUNTSMAN

BUILDING SOLUTIONS

LIFT, LEVEL AND
RENEW WITH
GEOLIFT™ CONCRETE
LIFTING FOAM



GEOLIFT™

CLOSED-CELL SPRAY FOAM



GEO LIFT[®]

CLOSED-CELL SPRAY FOAM

HIGH PERFORMANCE, QUALITY & ENERGY EFFICIENCY

Geolift™ is a water blown concrete lifting foam for both residential and commercial use on driveways, sidewalks and patios. By drilling dime-sized holes in the uneven concrete and injecting Geolift under the slabs, you can lift, level and renew.

Cost Effective

Demolition can be expensive. Instead of pouring new concrete, repair your sunken concrete with Geolift to save time and money on your renovation.

COMMON APPLICATIONS

- Driveways
- Sidewalks
- Patios
- Garage Floors
- Pool Decks

Available in 2.5 lb. and 4 lb. density



1

DRILL HOLES

Holes are drilled in the concrete slabs that are being raised. The holes should be 5/8" and no less than 6" away from the edge of the slab.



2

INJECT GEOLIFT

Geolift is injected between the dirt and the slab, filling the voids created by erosion and raising it to the proper height.



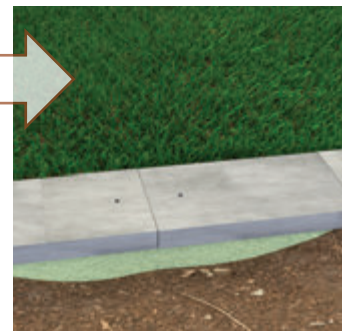
3

PATCH HOLES

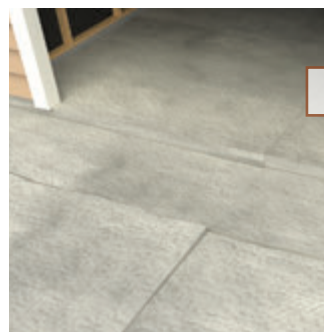
Once Geolift has cured and the slabs are level, the drilled holes are patched with concrete, and the slabs are left looking new.



BEFORE



AFTER



BEFORE



AFTER